

2026 SBW Populations Quebec and Maine and Treated Area

2025 Treatment Areas ME QC

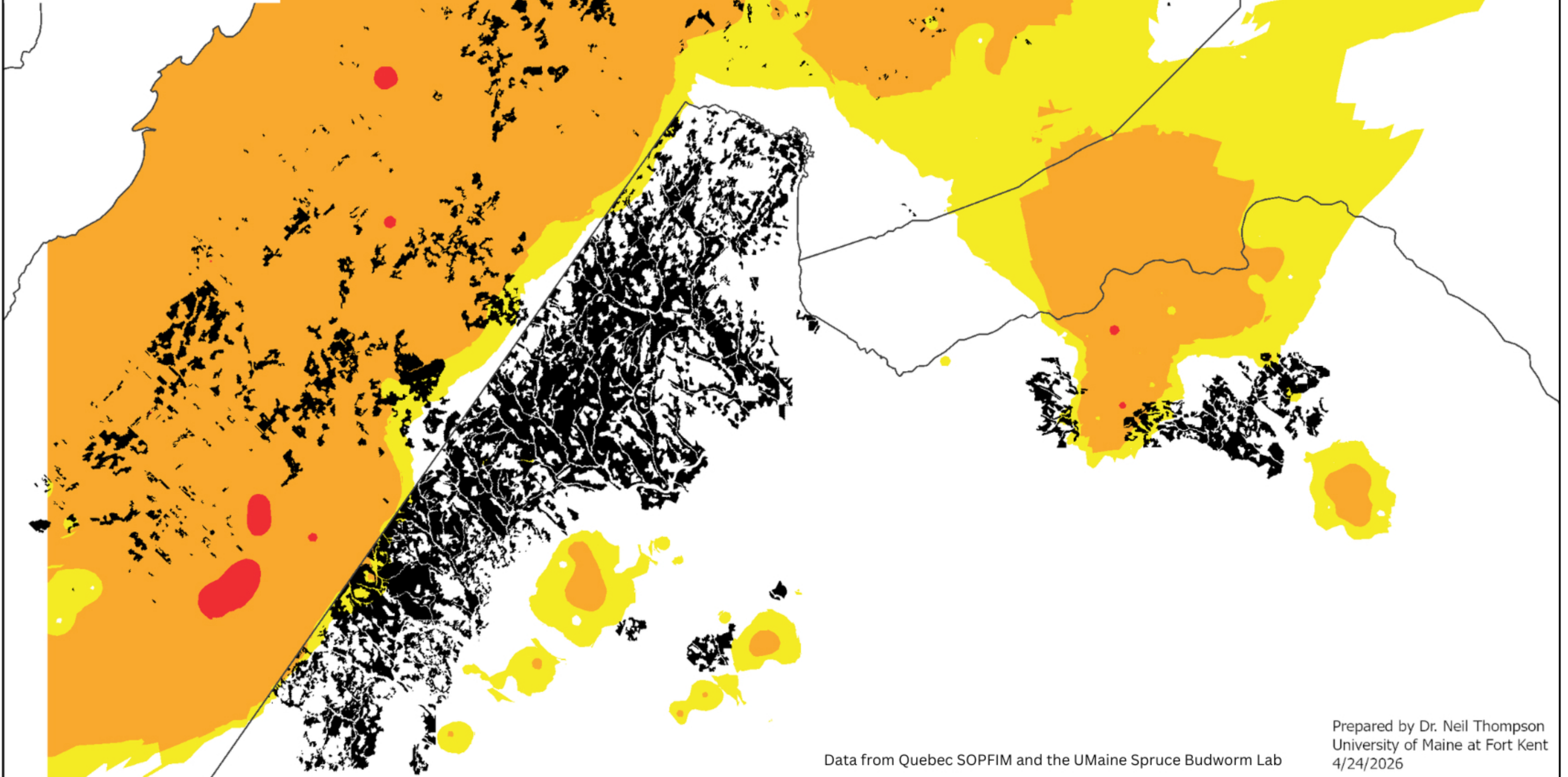
InterpolatedL2Values_Clip

Not Clipped to Stand Types

3.5-6.5 Per Branch

6.5-40.5 Per Branch

<40.5 Per Branch



Data from Quebec SOPFIM and the UMaine Spruce Budworm Lab

Prepared by Dr. Neil Thompson
University of Maine at Fort Kent
4/24/2026